

Size Dia 0.2 - 12.0 mm  
Flutes 2

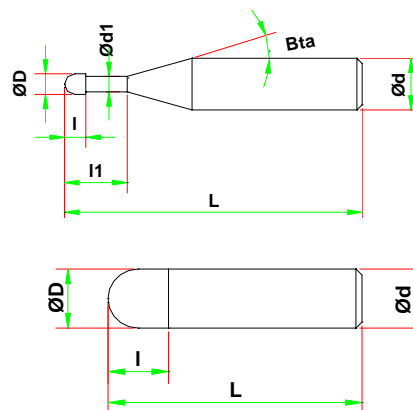


HB




 R0.05-R3  





Now with 4, 6, 8, 10 & 12 mm shanks

Oil mist / Airblow coolant recommended

For outstanding heat resistance and lubrication ability on hard milling up to 65 HRC

Applicable Work Materials

(MS = Most Suitable S = Suitable)

Work Materials										
Carbon Steels	Alloy Steels	Prehardened Steels	Hardened Steels			Cast Iron	Aluminium Alloy	Graphite	Copper	Plastic
			55HRC	60HRC	65HRC					
S	S	MS	MS	MS	MS	S			S	

4 mm Shank

units = mm

Union Tool Part Number	Diameter	No of Flutes	Flute Length	Overall Length	Shank Diameter	Price
	<b>D</b>		<b>I</b>	<b>L</b>	<b>d</b>	
HB 2002-0030	0.20	2	0.30	50	4	
HB 2003-0045	0.30	2	0.45	50	4	
HB 2004-0060	0.40	2	0.60	50	4	
HB 2005-0075	0.50	2	0.75	50	4	
HB 2006-0090	0.60	2	0.90	50	4	
HB 2008-0120	0.80	2	1.20	50	4	
HB 2010-0150	1.00	2	1.50	50	4	
HB 2010-0250			2.50			
HB 2015-0200	1.50	2	2.00	50	4	
HB 2015-0400			4.00			
HB 2020-0300	2.00	2	3.00	50	4	
HB 2020-0600			6.00			
HB 2025-0375	2.50	2	3.75	50	4	
HB 2025-0600			6.00			

6 mm Shank

HB 1001-0020-6	0.10	1	0.20	50	6	
HB 2002-0020-6	0.20	2	0.20	50	6	
HB 2003-0030-6	0.30	2	0.30	50	6	
HB 2004-0040-6	0.40	2	0.40	50	6	
HB 2005-0050-6	0.50	2	0.50	50	6	
HB 2006-0060-6	0.60	2	0.60	50	6	
HB 2008-0080-6	0.80	2	0.80	50	6	
HB 2010-0100-6	1.00	2	1.00	50	6	
HB 2015-0150-6	1.50	2	1.50	50	6	
HB 2020-0200-6	2.00	2	2.00	50	6	

Union Tool Part Number	Diameter	No of Flutes	Flute Length	Overall Length	Shank Diameter	Price
	<b>D</b>		<b>l</b>	<b>L</b>	<b>d</b>	
HB 2025-0250-6	2.50	2	2.50	50	6	
HB 2030-0450	3.00	2	4.50	70	6	
HB 2030-0800			8.00			
HB 2040-0600	4.00	2	6.00	70	6	
HB 2040-0800			8.00			
HB 2050-0800	5.00	2	8.00	80	6	
HB 2050-1200			12.00			
HB 2060-1000	6.00	2	10.00	80	6	
HB 2060-1200			12.00			

**8 mm Shank**

HB 2080-1200	8.00	2	12.00	90	8	
HB 2080-1400			14.00			

**10 mm Shank**

HB 2100-1500	10.00	2	15.00	100	10	
HB 2100-1800			18.00			

**12 mm Shank**

HB 2120-1800	12.00	2	18.00	110	12	
HB 2120-2200			22.00			

**Excellent Series R +/-0.005 mm**

HB 2060-1000E	6.00	2	10.00	80	6	
HB 2080-1200E	8.00	2	12.00	90	8	
HB 2100-1500E	10.00	2	15.00	100	10	